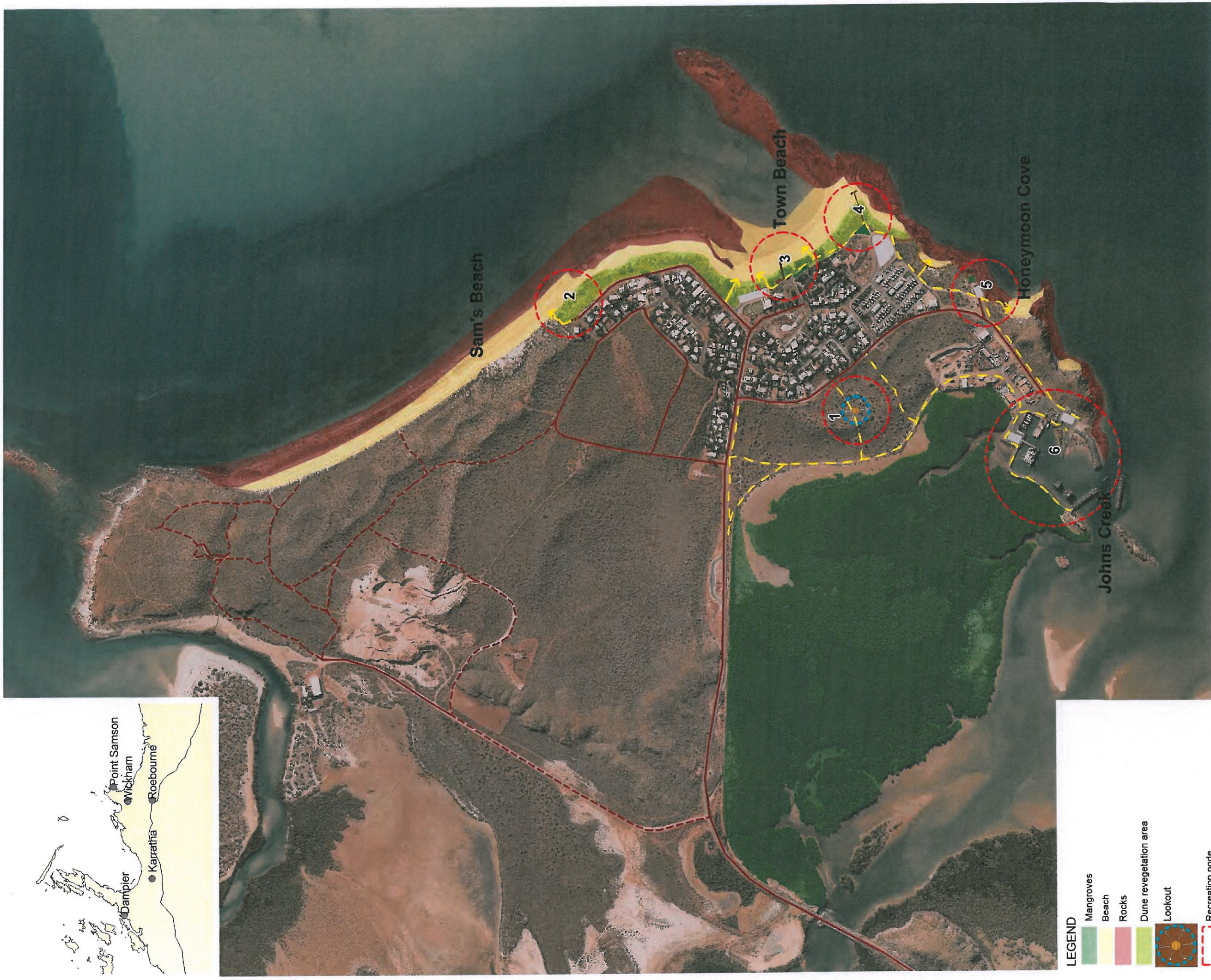


Shire of Roebourne - Point Samson foreshore management plan  
 Figure 5 - Plan overview



\* ©2013. While Essential Environmental has taken care to ensure the accuracy of this product, Essential Environmental and client make no representations or warranties about its accuracy, completeness or suitability for any particular purpose. Essential Environmental and client cannot accept liability of any kind (whether in contract, tort or otherwise) for any expenses, losses, damages and/or costs (including indirect or consequential damage) which are or may be incurred as a result of the product being inaccurate, incomplete or unsuitable in any way and for any reason. Data sources: UDLA, Landgate, Geoscience Australia, Created by: H Brookes, Projection: MGA50 zone 50.